

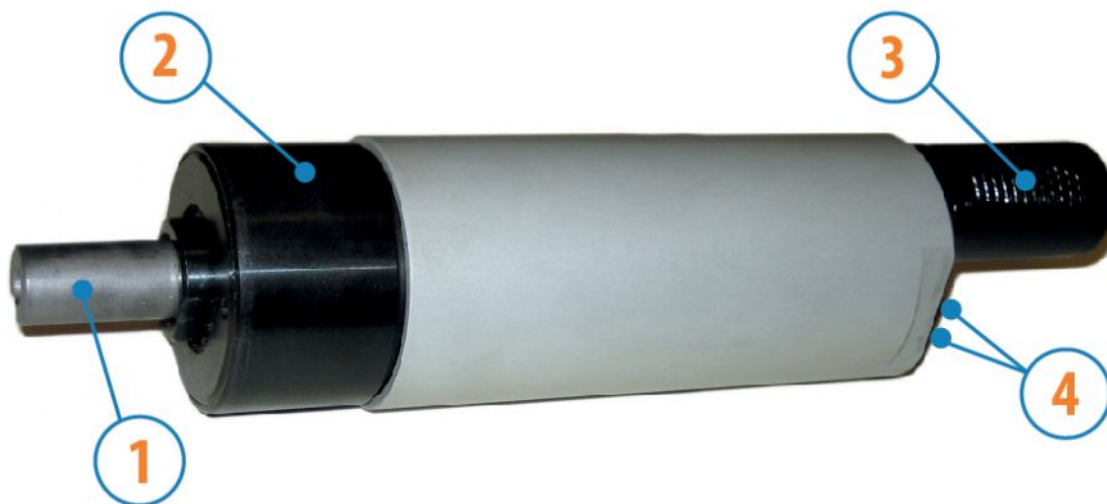
MOTORS WITH POWER UP TO 850 W

SP SERIES - Reversible

WATT: 610 / Consumption: 890 NI/1"

DATA SHEET

SP6R



1. Cylindrical keyed shaft
2. Grip zone
3. Air exhaust
4. Air inlets

Technical sheet

- Model	SP6R
- Code	8731255
Speed rpm - No-load	480
Speed rpm - at Max Power	240
Torque Nm - at Max Power	24,5
Torque Nm - Stall Torque	44,0

CHARACTERISTICS OF SHAPE

The normal delivery condition: cylindrical shaft and body as shown in the photo.

Optional:

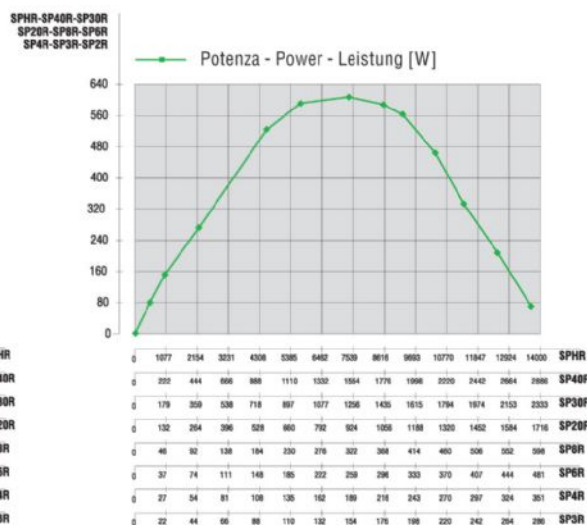
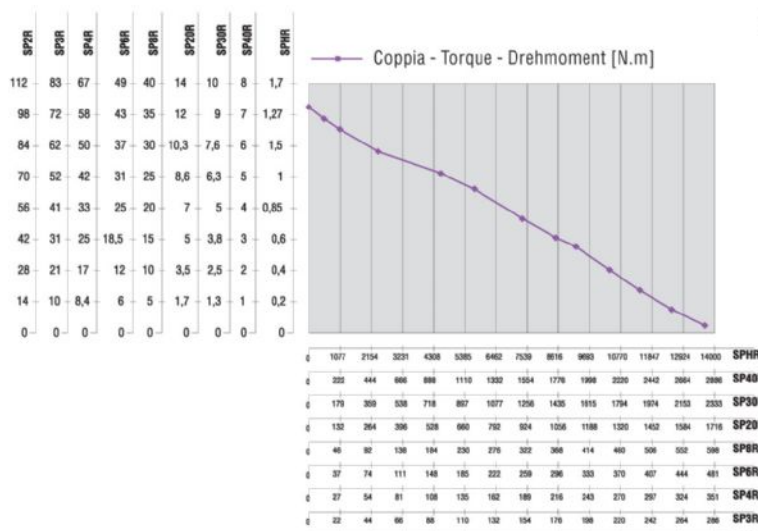
Shaft

- threaded - indication /AF (left rotation excluded - subject to checks for reversible)

- conical - indication /AC

- with collets - indication / AP

PERFORMANCE FIGURES



MOTORS WITH POWER UP TO 850 W

SP SERIES - Reversible

WATT: 610 / Consumption: 890 NI/1"

DATA SHEET

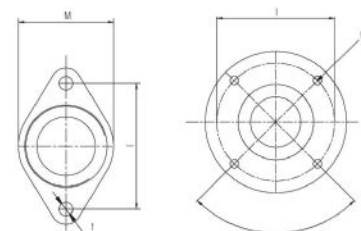
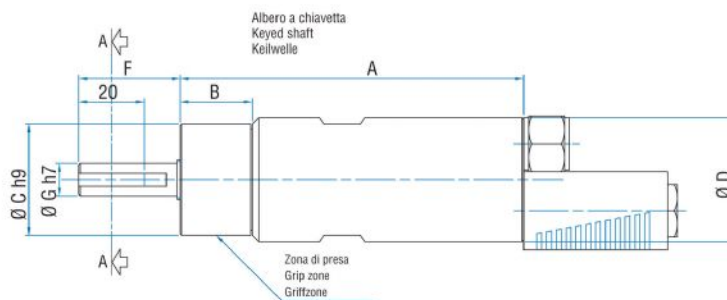
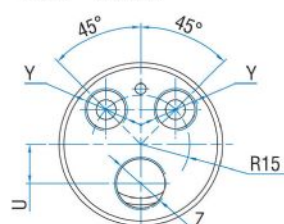
SP6R

RADIAL AND AXIAL LOADS

Model	Code	Fr (N)	Fa (N)	Co (N)
SP6R	8731255	2050	2350	4750

OVERALL DIMENSIONS

Serie SP Reversibile
Series SP Reversible
Serie SP Umsteuerbar



Flange disponibili per alcuni modelli.
Flanges available for some models.
Flansche erhältlich für einige Modelle.

Model	Code	A	B	C	D	F	G	H	I	L	M	N	O	P	Q	R	S	T
SP6R	8731255	174	59	48	50	31,5	14	3	5	M6	1/2"x20UNF	16	20,5	B12	26	ER16	2	