

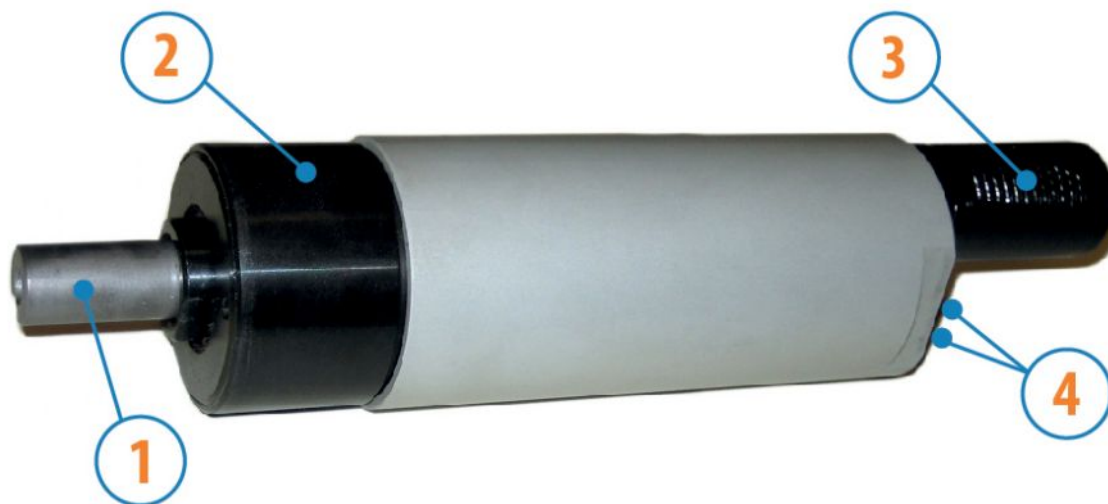
# MOTORS WITH POWER UP TO 850 W

SP SERIES - Reversible

WATT: 610 / Consumption: 890 NI/1"

# DATA SHEET

## SP4R



- 1. Cylindrical keyed shaft
- 2. Grip zone
- 3. Air exhaust
- 4. Air inlets

### Technical sheet

- Model	SP4R
- Code	8731256
Speed rpm - No-load	350
Speed rpm - at Max Power	175
Torque Nm - at Max Power	33,3
Torque Nm - Stall Torque	60,0

### CHARACTERISTICS OF SHAPE

The normal delivery condition: cylindrical shaft and body as shown in the photo.

Optional:

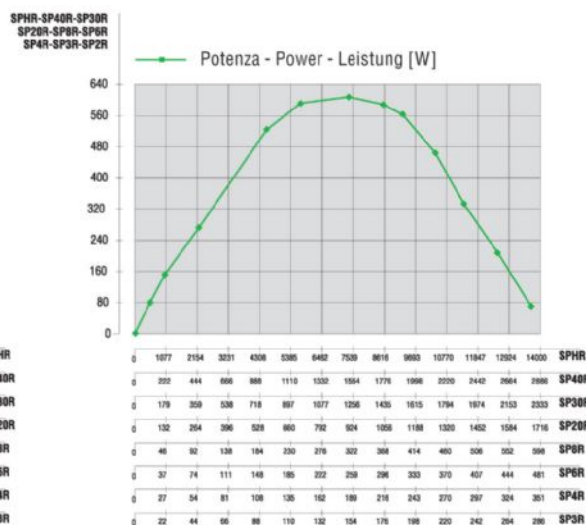
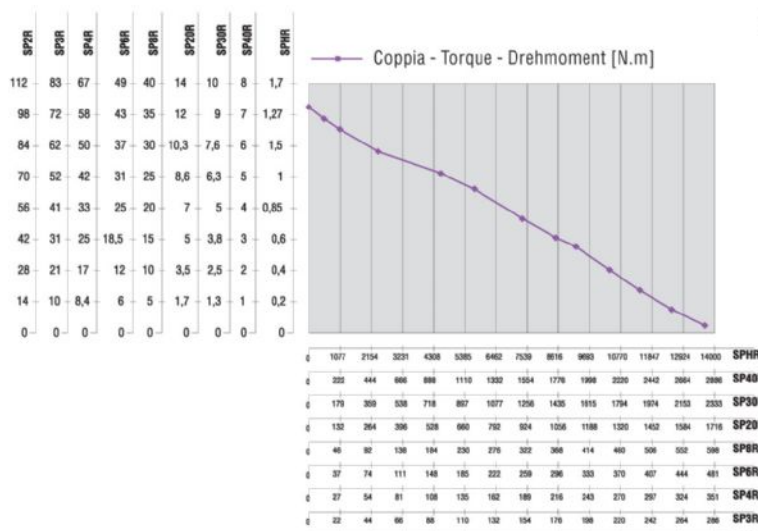
Shaft

- threaded - indication /AF (left rotation excluded - subject to checks for reversible)

- conical - indication /AC

- with collets - indication / AP

### PERFORMANCE FIGURES



## MOTORS WITH POWER UP TO 850 W

SP SERIES - Reversible

WATT: 610 / Consumption: 890 NI/1"

DATA SHEET

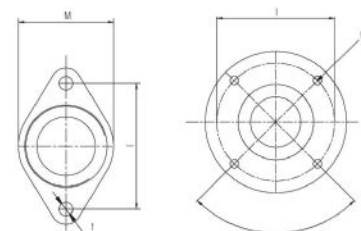
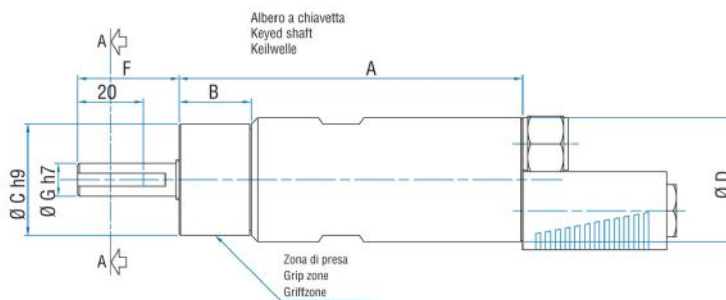
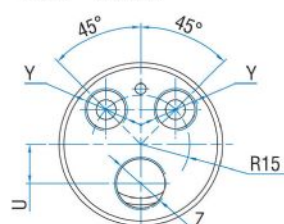
SP4R

### RADIAL AND AXIAL LOADS

Model	Code	Fr (N)	Fa (N)	Co (N)
SP4R	8731256	2050	2350	4750

### OVERALL DIMENSIONS

Serie SP Reversibile  
Series SP Reversible  
Serie SP Umsteuerbar



Flange disponibili per alcuni modelli.  
Flanges available for some models.  
Flansche erhältlich für einige Modelle.

Model	Code	A	B	C	D	F	G	H	I	L	M	N	O	P	Q	S	S
SP4R	8731256	174	59	48	50	31,5	14	3	5	M6	1/2"x20UNF	16	20,5	B12	26	ER16	2