

# MOTORS WITH POWER UP TO 850 W

P SERIES - Reversible

WATT: 570 / Consumption: 830 NI/1'

Data measured at pressure of 6 bar - Minimum supply hose diameter: 10 mm

DATA SHEET  
**P30R**



1. Cylindrical keyed shaft
2. Grip zone
3. Air inlets
4. Air exhaust

## Technical sheet

- Model	P30R
- Code	8731133
Speed rpm - No-load	3100
Speed rpm - at Max Power	1820
Torque Nm - at Max Power	3,0
Torque Nm - Stall Torque	4,9

## CHARACTERISTICS OF SHAPE

The normal delivery condition:

cylindrical shaft and body as shown in the photo.

Optional:

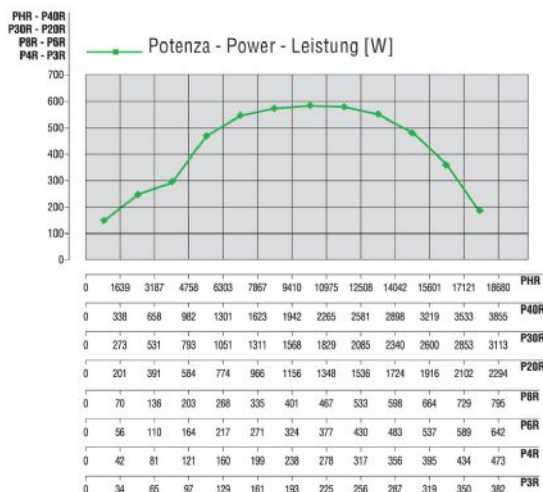
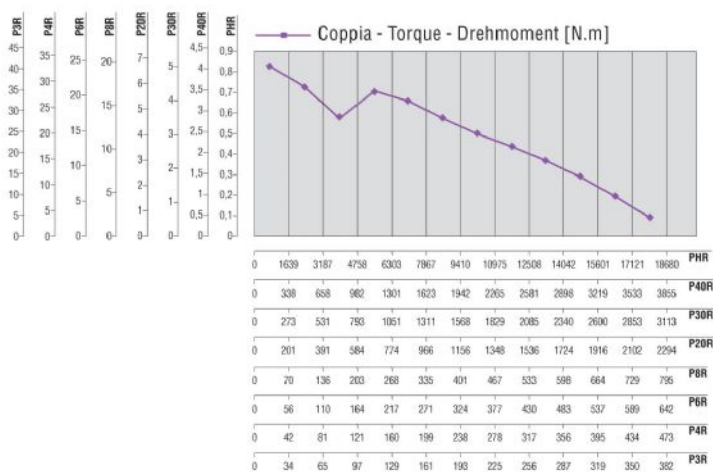
Shaft

- threaded - indication /AF (left rotation excluded - subject to checks for reversible)

- conical - indication /AC

- with collets - indication / AP

## PERFORMANCE FIGURES



## MOTORS WITH POWER UP TO 850 W

P SERIES - Reversible

WATT: 570 / Consumption: 830 NI/1'

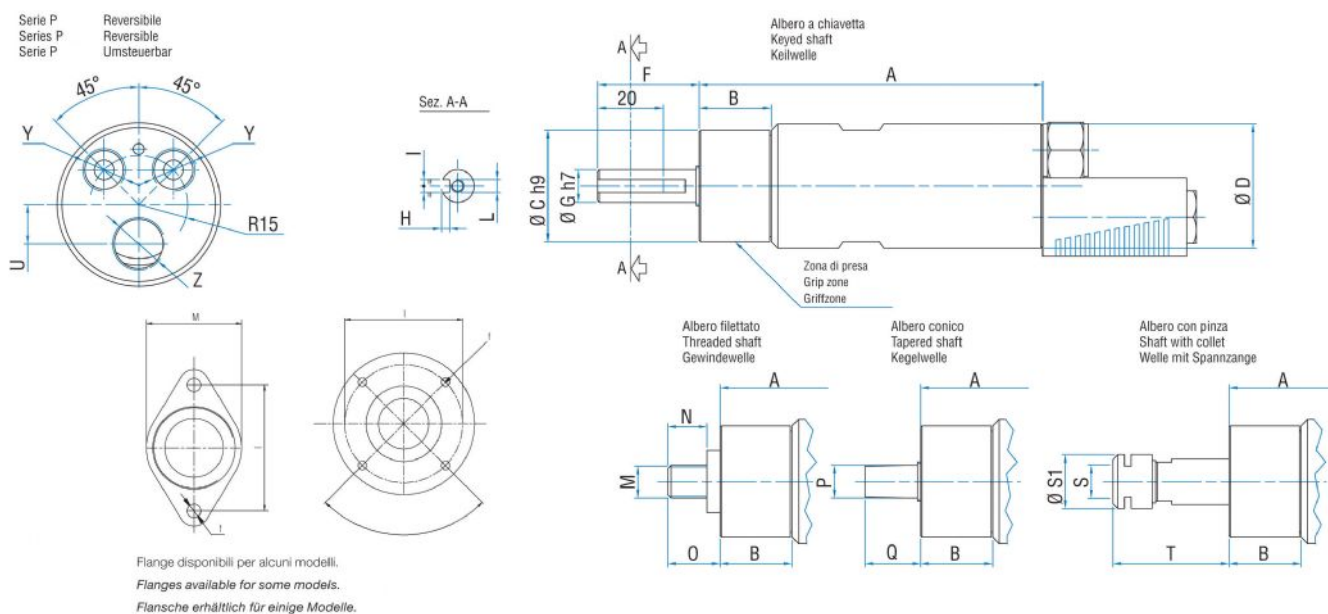
Data measured at pressure of 6 bar - Minimum supply hose diameter: 10 mm

DATA SHEET  
**P30R**

### RADIAL AND AXIAL LOADS

Model	Code	Fr (N)	Fa (N)	Co (N)
P30R	8731133	2050	2350	4750

### OVERALL DIMENSIONS



Model	Code	A	B	C	D	F	G	H	I	L	M	N	O	P	Q	S	S
P30R	8731133	126	31	48	50	31,5	14	3	5	M6	1/2"x20UNF	16	20,5	B12	26	ER16	2